



INSPECTION & MAINTENANCE SCHEDULE FOR SWING RANGE (RP282 – RP284)

All play equipment should be maintained in accordance with EN1176 Part 1. The frequency of inspection will vary with the type of equipment or materials used and other factors, e.g. heavy use, levels of vandalism, coastal location, air pollution and age of equipment. Should you require additional information or assistance please contact our office on 01757 703620.

Routine Visual Inspection (WEEKLY)

Check For: Structural integrity
 Excessive wear of moving parts
 Missing parts
 Sharp edges
 Exposed foundations
 Ground clearances
 Cleanliness
 Ground surface finishes

For playgrounds subject to heavy use or vandalism, daily inspection is advised as above.

Operational Inspection (1 TO 3 MONTHS)

Check For: All the foregoing
 No trip points or obstructions within the falling space
 Special attention should be given to 'sealed for life' parts
 Check moving components for wear and tear, and lubricate as required
 The seats are at the recommended height and level
 Swing seats are undamaged and free of foreign objects
 Check that Flat Seats and Cradle Seats are not mixed within the same bay
 Swing shackles move freely
 Chains are not twisted and worn
 Ensure that site is free of debris and miscellaneous objects
 Wear in Swing Bushes

Annual Main Inspection (NOT EXCEEDING 12 MONTHS)

Check For: All the foregoing
 Effects of weather
 Rotting or corrosion
 A change in the level of safety of the equipment as a
 result of repairs made, or of added or replaced components

**ALL REPLACEMENT PARTS SHALL COMPLY WITH RECORD
PLAYGROUND EQUIPMENT LIMITED SPECIFICATIONS.**

SAFETY DATA SHEET Tractol Supreme II (CE33 range)

1) IDENTIFICATION OF THE PREPARATION AND THE COMPANY:

Product Name: Tractol Supreme II Enamel. **Synonyms / Trade Names:** CE33 + AL3, BG7, BH4, CJ9, D09, T03, XOO, OOF, 06L, 127, 175, 218, 226, 339, 356, 431, 459, 500, 504, 52Q, 538, 584, 688, 803, 85J, 902, **Applications:** Finish coat applied over suitably prepared substrate. Application by air spray, air assisted airless spray, hot spray + HVLP. Base component, for professional use only. Refer to Technical Data sheet for further information **Supplier:** Ameron Coatings Ltd, Bankside, Hull, HU5 1SQ. **Emergency Telephone:** 01482 341441

2) COMPOSITION INFORMATION ON INGREDIENTS:

<u>INGREDIENT NAME</u>	<u>CAS No.</u>	<u>CONTENTS</u>	<u>HEALTH (class)</u>	<u>RISK (R No.)</u>
XYLENE	330-20-7	10-25%	Xn	20/21,38
ETHYLBENZENE	100-41-4	2.5-10%	Xn	20
BUTYL ACETATE	123-41-4	2.5-10%		
SOLVENT I70: PETROLEUM & COAL TAR DISTILLATES	64742-95-4	10-25%		
METHOXY-2-PROPYL ACETATE (CE33-500 only)	186-65-6	2.5-10%	Xi	36
BUTYLGLYCOLATE	7397-62-8	2.5-10%	Xi	41

COMPOSITION COMMENTS: Substances presenting a hazard within the meaning of the Chemicals (Hazard Information and Packaging) Regulations 1993 and subsequent amendments (Directives 6715481EEC 881379/EEC).

3) HAZARDS IDENTIFICATION:

Flammable - Harmful by inhalation and in contact with skin. Irritating to eyes.

4) FIRST AID MEASURES:

General: In all cases of doubt, or when symptoms persist, seek medical attention Never give anything by mouth to an unconscious person **Eyes:** Contact lenses should be removed Irrigate copiously with clean, fresh water for at least 10 minutes, holding the eyelids apart and seek medical advice. **Skin:** Remove contaminated clothing. Wash skin thoroughly with soap and water or use a proprietary skin cleaner. Do NOT use solvents or thinners. **Inhalation:** Remove to fresh air and warm and at rest. If breathing has stopped, administer artificial respiration. Give nothing by mouth. If unconscious, place in the recovery position and seek medical advice. **Ingestion:** if accidentally swallowed obtain immediate medical attention. Keeps at rest do NOT induce vomiting.

5) FIRE FIGHTING MEASURES:

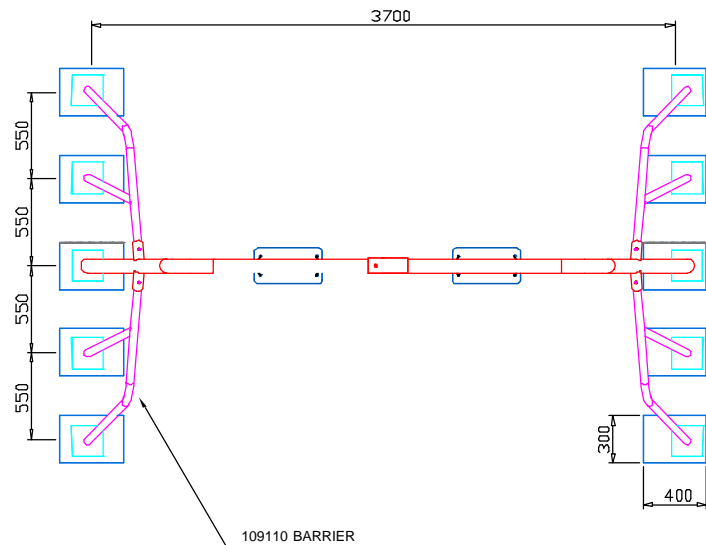
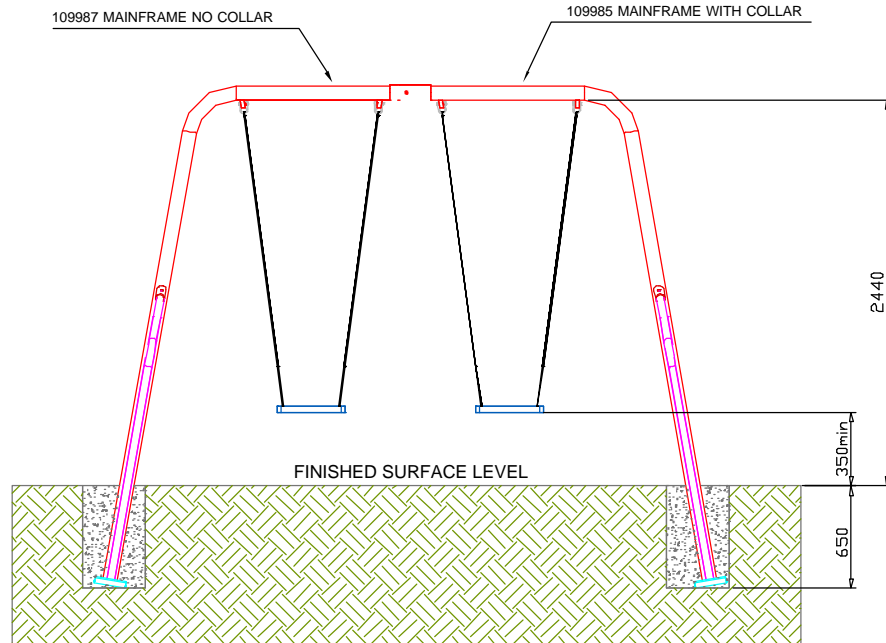
Extinguishing Media: Use sand, alcohol resistant foam, carbon dioxide, chemical powder, water fog for larger fires. Do not use water jet **Special Fire Fighting Procedures:** As the product contains combustible organic components, fire will produce dense black smoke containing hazardous products of combustion (see Section 10). Exposure to decomposition products may be a hazard to health. Appropriate self-contained breathing apparatus may be required. Cool closed containers exposed to fire with water spray. Do not allow run off from fire fighting to enter drains or water courses.

6) ACCIDENTAL RELEASE MEASURES:

Spill Cleanup Methods: Exclude sources of ignition and ventilate the area. Exclude nonessential personnel. Avoid breathing vapours. Refer to protective measures listed in sections 7 and 8. Contain and collect spillage's with non-combustible absorbent materials e.g. sand, and place in a suitable container for disposal in accordance with the waste regulations (see Section 13). Do not allow to enter drains or water courses. Clean preferably with a detergent; avoid the use of solvents. If the product enters drains or sewers the local Water Company should be contacted immediately; in the case of contamination of streams, rivers or lakes, the National Rivers Authority.

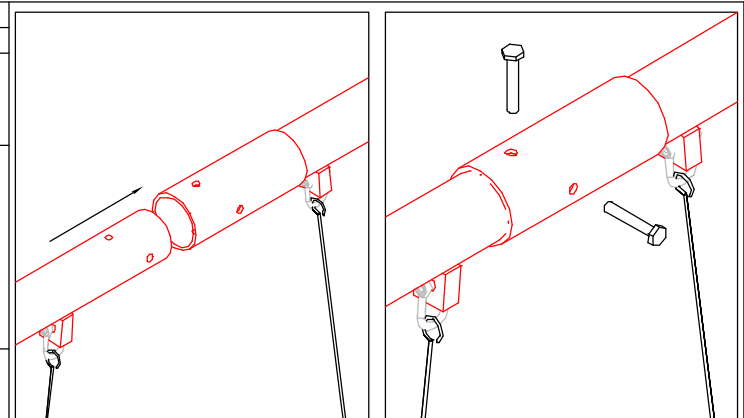
7) HANDLING AND STORAGE:

Usage Precautions: Vapours are heavier than air and may spread along floors. They may form explosive mixtures with air. Prevent the creation of flammable or explosive concentrations of vapour in air and avoid vapour concentrations higher than the occupational exposure limits. The product should only be used in areas from which all sources of ignition have been excluded. Electrical equipment should be protected to the appropriate standard. Keep the container tightly closed. Non-sparking tools should be used. Avoid skin and eye contact. Avoid inhalation of vapour and spray mist. Smoking, eating and drinking should be prohibited in areas of storage and use. For personal protection see Section 8. Never use pressure to empty; the container is not a pressure vessel. Always keep in containers made of the same material as the supply container. Good housekeeping standards and regular safe removal of waste materials will minimise the risks of spontaneous combustion and other fire hazards. **Storage Precautions:** Although the storage of this product not subject to specific statutory requirements, the principles contained in the HSE guidance note "Storage of Flammable Liquids in Containers" should be observed Store separately from oxidising agents and strongly acidic or strongly alkaline materials. Observe the label precautions. Store between 5 and 35 °C in dry, well-ventilated places away from sources of heat, ignition and direct sunlight No smoking. Prevent unauthorised access. Containers, which are opened, should be properly resealed and kept upright to prevent leakage. The principles contained in the HSE guidance note "Storage of Packaged Dangerous Substances" should be observed when storing this product.



INSTALLATION SEQUENCE

DESCRIPTION & DETAILS	
STEP ONE	EXCAVATE FOUNDATIONS AS INDICATED 650mm DEEP FROM FINISHED SURFACE LEVEL
TWO	BOLT TOGETHER MAINFRAMES (109985 & 109987) WITH 2 No M12 X 120 BOLTS & 2 No M2 NUTS AND CONNECT BARRIERS (109110) USING M10 X 30 RESISTORX. SET IN PREVIOUSLY EXCAVATED FOUNDATIONS USING 0.80m ³ OF CONCRETE (4:2:1 MIX) ENSURE CROSS BEAMS ARE LEVEL. ALLOW 60 HOURS FOR CONCRETE TO CURE
THREE	FIT SWING SEATS & CHAINS TO PIVOT BLOCKS USING 4 No 'D' SHACKLES



MAIN FRAMES CONNECTED USING 2 No M12 X 120 BOLTS & 2 No M12 NUTS

NOTES

ENSURE SHACKLE SWINGS FREELY ON PIVOT BLOCK & DO NOT OVER TIGHTEN LOCK NUT.

EN1176 PART 2 - ENSURE MINIMUM GROUND CLEARANCE OF UNDERSIDE OF SWING SEAT AT REST 350mm.

THE FREE SPACE REQUIREMENT IS 7m x 3m.

THE FREE HEIGHT OF FALL IS 1.5m.

CONSTRUCTIONAL SPACE REQUIREMENTS 10m X 10m

CHECK TIGHTNESS OF BOLTS FOLLOWING A 2 WEEK RUN IN PERIOD.

FOUNDATION DETAIL IS ASSUMING GOOD GROUND CONDITIONS **CARE SHOULD BE TAKEN CONCERNING ABNORMAL GROUND CONDITIONS.**

REPLACEMENT COMPONENTS MUST COMPLY WITH RECORD PLAYGROUND EQUIPMENT LTD SPECIFICATIONS.

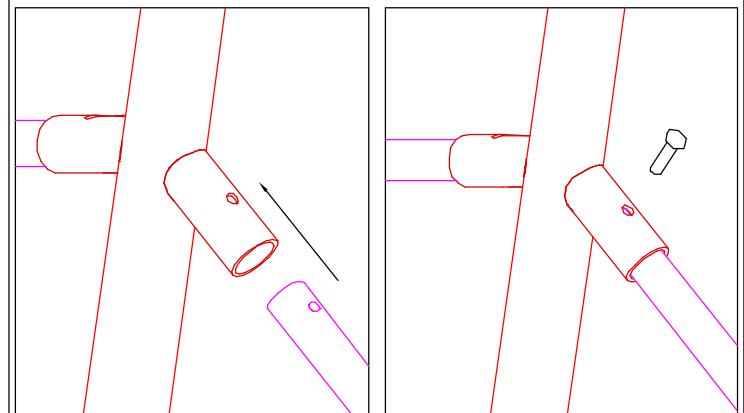
ALL DIMENSIONS IN MILLIMETERS.

WARNING-SOME OF THESE COMPONENTS MAY EXCEED THE SINGLE PERSONS LIFTING ALLOWANCE

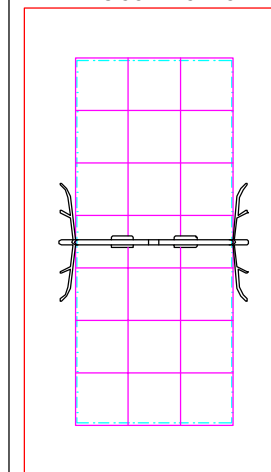
ENSURE EQUIPMENT IS PROTECTED FROM USAGE THROUGHOUT INSTALLATION, MAINTENANCE & REPAIR

TOUCH UP ANY DAMAGED PAINT WORK

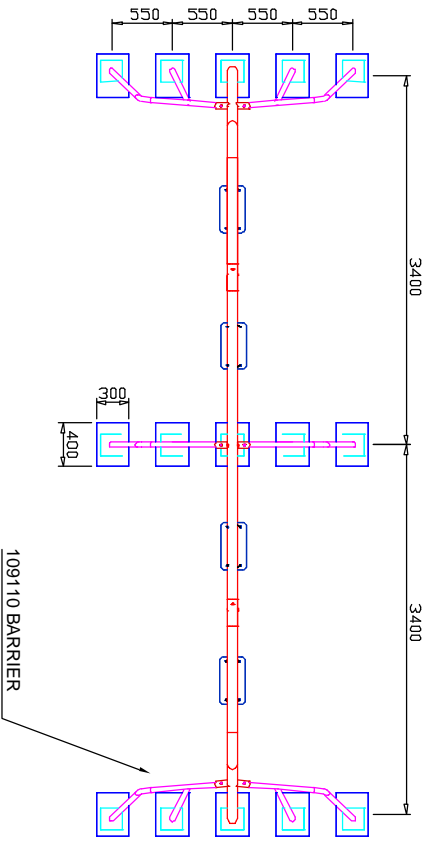
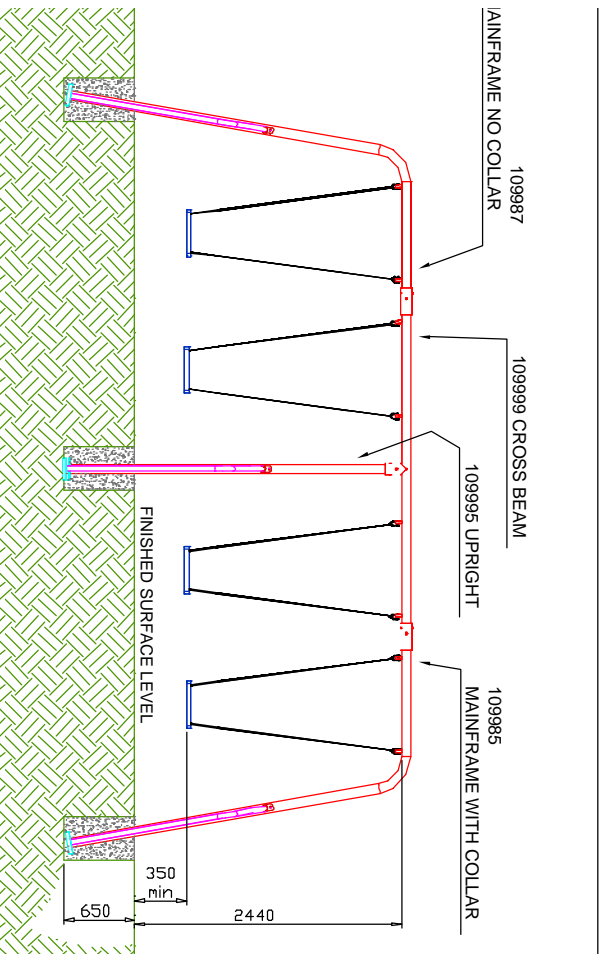
ENSURE LEVEL SURFACE ON ALL EQUIPMENT.



BARRIERS CONNECT TO MAINFRAMES USING 1 No M10 X 30 RESISTORX



RP282 SUPERSWING 2 SEAT
 FHF=1.50m
 FS=6.85m x 2.96m
 SURFACING=21.00m² @50mm THICK PLAYTILES
 SURFACING=21.00m² @50mm THICK WETPOUR



INSTALLATION SEQUENCE

STEP	DESCRIPTION & DETAILS
ONE	EXCAVATE FOUNDATIONS AS INDICATED 650mm DEEP FROM FINISHED SURFACE LEVEL
TWO	BOLT TOGETHER MAINFRAMES, CROSS BEAM AND CENTRE UPRIGHT (109985, 109987, 109999 & 109995) WITH 6 No M12 X 120 BOLTS & 6 No M2 NUTS AND CONNECT BARRIERS (109110) USING M10 X 30 RESISTORX. SET IN PREVIOUSLY EXCAVATED FOUNDATIONS USING 1.20m ³ OF CONCRETE (4:2:1 MIX) ENSURE CROSS BEAMS ARE LEVEL. ALLOW 60 HOURS FOR CONCRETE TO CURE
THREE	FIT SWING SEATS & CHAINS TO PIVOT BLOCKS USING 8 No 'D' SHACKLES

NOTES

ENSURE SHACKLE SWINGS FREELY ON PIVOT BLOCK & DO NOT OVER TIGHTEN LOCK NUT.

EN1176 PART 2 - ENSURE MINIMUM GROUND CLEARANCE OF UNDERSIDE OF SWING SEAT AT REST 350mm.

THE FREE SPACE REQUIREMENT IS 7m x 6m .

THE FREE HEIGHT OF FALL IS 1.5m.

CONSTRUCTIONAL SPACE REQUIREMENTS
15m X 10m

CHECK TIGHTNESS OF BOLTS FOLLOWING A 2 WEEK RUN IN PERIOD.

FOUNDATION DETAIL IS ASSUMING GOOD GROUND CONDITIONS **CARE SHOULD BE TAKEN CONCERNING ABNORMAL GROUND CONDITIONS.**

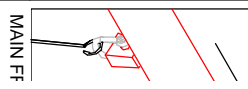
REPLACEMENT COMPONENTS MUST COMPLY WITH RECORD PLAYGROUND EQUIPMENT LTD SPECIFICATIONS.

ALL DIMENSIONS IN MILLIMETERS.

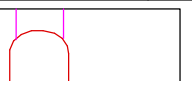
WARNING-SOME OF THESE COMPONENTS MAY EXCEED THE SINGLE PERSONS LIFTING ALLOWANCE

ENSURE EQUIPMENT IS PROTECTED FROM USAGE THROUGHOUT INSTALLATION, MAINTENANCE & REPAIR

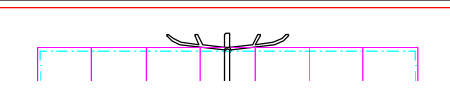
TOUCH UP ANY DAMAGED PAINT WORK
ENSURE LEVEL SURFACE ON ALL EQUIPMENT.



MAIN FF



BARRIE



8) EXPOSURE CONTROLS / PERSONAL PROTECTION:

<u>INGREDIENT NAME</u>	<u>CAS No.</u>	<u>STD</u>	<u>LT EXP(8hrs)</u>	<u>ST EXP (15min)</u>
XYLENE	1330-20-7	OES	100 ppm (Sk)	150 ppm (Sk)
ETHYLBENZENE	100-41-4 OES	100 ppm	125 ppm	
BUTYL ACETATE	123-86-4 OES	150 ppm	200 ppm	
SOLVENT 170: PETROLEUM & COAL TAR DISTILLATES	64742-95-6	35 ppm		
METHOXY-2-PROPYL ACETATE	108-65-6	100 ppm		

Ingredient Comments: REC denotes supplier's recommendation. **Ventilation:** Provide adequate ventilation. Where reasonably practicable this should be achieved by the use of local exhaust ventilation and good general extraction. If these are not sufficient to maintain concentrations below the relevant occupational exposure limits, suitable respiratory protective equipment should be worn. (See below). **Respirators:** Air-fed respiratory protective equipment should be worn when this product is sprayed if the exposure of the sprayer or other people nearby cannot be controlled to below the occupational exposure limits and engineering controls and methods cannot reasonably be improved. **Protective Gloves:** When exposure may occur, advice should be sought from glove suppliers on appropriate types to be worn. Barrier creams may help to protect exposed areas of skin but are not substitutes for full physical protection. They should not be applied once exposure has occurred. **Eye Protection:** Suitable eye protection should be worn if there is any risk of eye injury. Eye protection should be selected in accordance with BS2092.

9) PHYSICAL AND CHEMICAL PROPERTIES:

Appearance: mobile, liquid. **Solubility Description:** immiscible with water **Specific Gravity:** (Water = 1): 1.1-1.3 @20°C. **Vapour Density:** (air=1): > 1. **Viscosity:** 170s B4 **Flash Point:** 33°C. **Flash Point Method:** Sh CC (Setaflash closed cup). **Flammability Limit** - lower %: 0.80

10) STABILITY AND REACTIVITY:

Stability: Stable under the recommended storage conditions (see Section 7). In a fire, hazardous decomposition products such as smoke, carbon monoxide, carbon dioxide and oxides of nitrogen may be produced. Keep away from oxidising agents, strongly acidic and strongly alkaline materials to prevent the possibility of exothermic reaction.

11) TOXICOLOGICAL INFORMATION:

Toxicological Information: There is no data available on the product itself. Exposure to organic solvent vapours may result in adverse health effects such as irritation of the mucous membrane and the respiratory system and adverse effects on the renal and central nervous systems. Symptoms include headache, dizziness, fatigue, muscular weakness, drowsiness and in extreme cases loss of consciousness. Repeated or prolonged contact with the product may lead to removal of natural fats from the skin resulting in non-allergic contact dermatitis and absorption through the skin. Splashes in the eyes may cause irritation and reversible local damage.

12) ECOLOGICAL INFORMATION:

Environmental Hazards: There is no data available on the product itself. This product should not be allowed to enter drains or water courses or be deposited where it can affect ground or surface waters. The air pollution control requirements made under the Environmental Protection act may apply to this product

13) DISPOSAL CONSIDERATIONS:

Disposal Methods: Do not allow to enter drains or water courses or dispose of where ground or surface waters may be affected. Wastes, including emptied containers are controlled wastes and should be disposed of in accordance with regulations made under the Control of Pollution Act and the Environmental Protection Act using the information supplied in this data sheet. Advice should be sought from the waste Regulation Authority whether the special waste regulations apply.

14) TRANSPORT INFORMATION:

Road: UN No: 1263. **Label for Conveyance:** No transport warning sign required. **Air:** UN No: 1263. **Sea:** UN No: 1263
Sea Transport Class No.3.3 SEA PACK GR.: III. **Pollutant:** No.

15) REGULATORY INFORMATION:

Label for Supply: Harmful. (Orange / Black with cross symbol.). **Risk Phrases:** R-10 Flammable. R-20/21 Harmful by inhalation and in contact with skin. R-36 Irritating to eyes. **Safety Phrases:** S-23 Do not breathe gas/fumes/vapours/spray. S-51 Use only in well ventilated areas. S24/25 Avoid contact with skin and eyes. S36/37 Wear suitable protective clothing and gloves. **UK Regulatory References:** This product is classified and labelled for supply in accordance with the Chemicals (hazard information and packaging for supply) Regulations 1994 and subsequent amendments (Directive 88/379/EEC). The safety data sheet does not constitute the users own assessment of the workplace risk as required by other Health and Safety legislation e.g. the Control of Substances Hazardous to Health Regulations 1988.

16) OTHER INFORMATION:

User Notes: The information contained in this safety data sheet is based on the present state of knowledge and current national legislation. It provides guidance on health, safety and environmental acts of the product and should not be construed as any guarantee of technical performance or suitability for particular applications. The product should not be used for purposes other than those shown in Section 1 without first referring to the supplier. As the specific conditions of use are outside the supplier's control the user is responsible for ensuring that the requirements of relevant legislation are complied with. If this material is redistributed details of its hazards and recommended methods of safe handling must be passed to all users. Further information and relevant advice can be found in; EH 40 Occupational Exposure Limits. HS (G) 53 Respiratory protective equipment: a practical guide to users. EH 9 Spraying of highly flammable liquids (1977). IH (G) 22 electrical apparatus for use in potentially explosive atmospheres (1984). HS (G)51 Storage of flammable liquids in containers (1990)